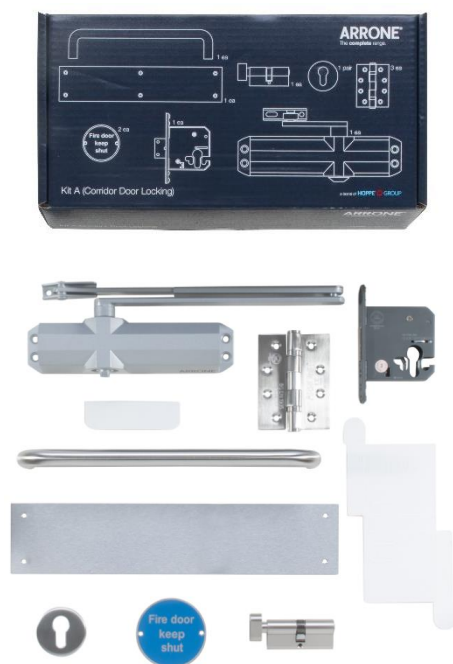


Kit A – Corridor Door - Locking

Application:

- Timber corridor fire doors within commercial office buildings, that have a basic security requirement. Up to 60 minutes resistance on Timber fire door sets
- **Door weight:** Suitable for fire rated doors up to 80kg
- **Door dimensions:** Suitable for fire rated doors up to 1100mm
- **Hinges:** 2 ball bearing, 3 pack, 102x76x3mm stainless steel material, template drilled, c/w timber door fixing screws. Suitable for doors weighing up to 120kg.
- **Door closing device:** Template adjustable power size 2-4, die cast aluminium body, scissor arm with parallel arm bracket, maximum opening angle 105°, closing and latching speed
- **Mortice deadlock:** 76mm case size, euro profile cylinder cut out, 20mm single throw steel laminated deadbolt
- **Cylinder:** Cylinder and turn, euro profile 70mm (35/35), oval shape thumb turn, keyed to differ with 3 keys.
- **Escutcheons:** 6x52mm diameter, stainless steel material, euro profile cut out.
- **Pull handle:** 19mm diameter x 300mm centres, stainless steel material, bolt through fixing
- **Fingerplate:** 350x75mm corner, drilled and countersunk, square corner, stainless steel material timber door pozi driv screws
- **Signage:** 76mm diameter, stainless steel material, "Fire door keep shut", drilled and countersunk c/w timber door pozi driv screws
- **Intumescent kits:** 1mm thickness mono-ammonium phosphate material, suitable for use on 30 or 60 minutes timber fire doors
Refer to fire door test evidence for further details
- **Carton dimensions:** 749mm x 645mm



| Product ref. | Article description | Finish | Article no. |
|--------------------|--|--------|-----------------|
| AR-FD/KIT-A | Fire Door Hardware Kit – A, Corridor Door, Locking, ARRONE Branded | N/A | 50012940 |

Kit A – Corridor Door - Locking

Kit Part Numbers:

| Product ref. | Article description | Finish | Article no. |
|-------------------------|--|--------|-----------------|
| AR8187-SSS | Ball Bearing Hinge (1.5 Pair), 102x76x3mm, Square, SSS | SSS | 87109450 |
| AR/INT-8180/8580 | Intumescent pack, 1mm, to suit 102x76m hinge range, pack of 6 | N/A | 50004578 |
| AR7006-76-SC | Euro Mortice Deadlock Case, 76mm SC Finish | SC | 50017895 |
| AR/INT-7006-76-1 | Intumescent Pack, 1mm, to suit AR7006 locks, 76mm Case Size | N/A | 50017354 |
| AR6800-SE | Size 2-4 Door Closer, Silver Enamel | SE | 87105960 |
| AR9616/300BF-SSS | SS304 Bolt Through Pull Handle, 19mm Dia. x 300mm Centres | SSS | 87109381 |
| AR324C-S-SSS | Fingerplate 350x75mm, Square, Square Corner, Drilled and Countersunk, c/w Wood Screws, SSS | SSS | 8506188 |
| AR902-SSS | "Fire door keep shut" Sign, 76mm Diameter | SSS | 8511284 |
| AR-KD-5121-BB-NP | Key & Oval Turn Euro Cyl. 35/35mm, 3 Keyed to Differ, NP Finish | NP | 87112109 |
| AR961/67-SSS | SS304 Euro Profile Escutcheon 6mm Rose, Satin Stainless Steel (F69) | SSS | 87109377 |

- **Testing:**
Hinges - BS EN 1935
Door closing devices - BS EN 1154
Locks and latches - BS EN 12209
Fire testing - BS EN 1634-1
- **CE Marked:** Hinges (AC0070), Door closing device (AD0095), Mortice deadlock (AG5225)
- **UKCA Marked:** Hinges (AC7678), Door closing device (AD7696), Mortice deadlock (AG7667)
- **CERTIFIRE Approved:** Hinges (CF369), Door closing device (CF603), Mortice deadlock (CF5939)
- **Ironmongery finish:**
 SSS – Satin Stainless Steel
 SE – Silver Enamel
 SC – Satin Chrome
 NP – Nickel Plated

Important note: The essential items of hardware in this fire door kit have been successfully included in fire tests to BSEN 1634-1 and where required as a mandatory measure, individually CE marked in accordance with the requirements of that item's related harmonised European standard.

Please refer to the door manufacturers own fire test evidence to ensure compatibility of the hardware items and the door set as a fire tested door set before specification or supply.